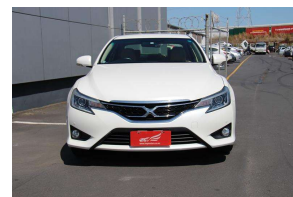


# 2012 Toyota MARK-X 250G



## VEHICLE INFORMATION

### Cash Price

Includes GST

# \$14,589

+ on-road-costs of \$495

Finance this vehicle  
from only

## \$82.05

per week\*

Total Amount Payable

\$21,334.29

finance  
**NOW**

### Body

Sedan

### Odometer

93,000 km

### Engine

2500 cc, Internal Combustion

### Fuel Type

Petrol

### Transmission

Auto, Front Wheel

### Wheels

-

### VIN

-

### Reg No.

-

### Ext Colour

Pearl

### History

Ex-Overseas

### Seats

5 seats, Cloth

### Interior

Beige, Cloth

### Audio

CD Player

### Stock ID

1291



Gain peace of mind  
with Mechanical  
Breakdown Insurance.  
Ask us how.

### Exterior Features

- » Alloys
- » Central Locking
- » Electric Mirrors
- » Parking Sensors
- » Remote Locking
- » Reversing Camera
- » Tailgate

### Interior Features

- » Air Bag(s)
- » Air Conditioning
- » Car Stereo
- » CD(s)
- » Central Locking
- » Climate Control

### Mechanical Features

- » ABS Brakes
- » Electric Mirrors
- » Electric Windows
- » Power Steering



Hey Motors, Phone 09 428 2353, Email [heymotors@gmail.com](mailto:heymotors@gmail.com)  
51 Hillside Road, Wairau Valley, Auckland 0627, New Zealand  
[www.heymotors.co.nz](http://www.heymotors.co.nz)

\* Finance calculation based on a 60 month term, no deposit and with an example annual fixed interest rate of 12.95%. Actual interest rate may be higher or lower. Includes an establishment fee of \$495.00 and a monthly maintenance fee of \$1.50. Full term total amount payable of \$21,334.29. Estimate only, not an offer of finance. Terms, conditions and lending criteria apply.